



Medium Voltage Metal-Enclosed Utility Metering Cabinet



IEM's MV Metal-Enclosed Utility Metering Cabinet provides the customer with the flexibility and cost savings of a completely factory-assembled primary utility metering cabinet with the customer's option of voltage and current transformers. In addition, the customer has the flexibility of choosing between two distinct VT disconnect switches based on required features and advantages. The VT disconnect switch's open/closed position can be easily seen through viewing windows making the metering cabinet very safe during maintenance.



Utility Compartment Main Bus

Ratings

- Voltage: 5kV and 15kV
- BIL: 95 kV
- Dielectric: 36 kV
- Current ratings: 600A, 1200A, 2000A, and 3000A

Main Bus Sizes

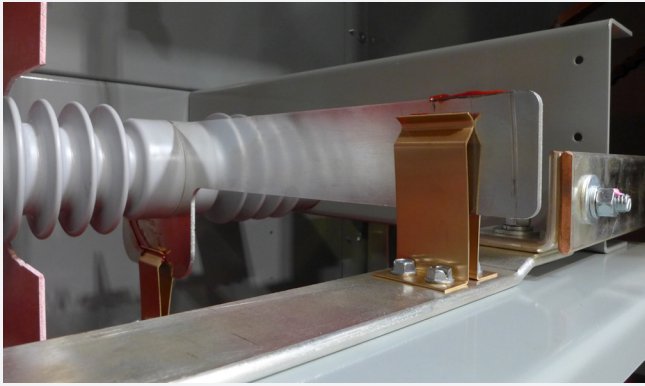
- 600A Cu (1) 1/4" x 2"
- 1200A Cu (1) 1/4" x 4"
- 2000A Cu (2) 1/4" x 4" or (1) 3/8" x 6"
- 3000A Cu (3) 1/4" x 4" or (2) 1/4" x 6"

Enclosure Sizes

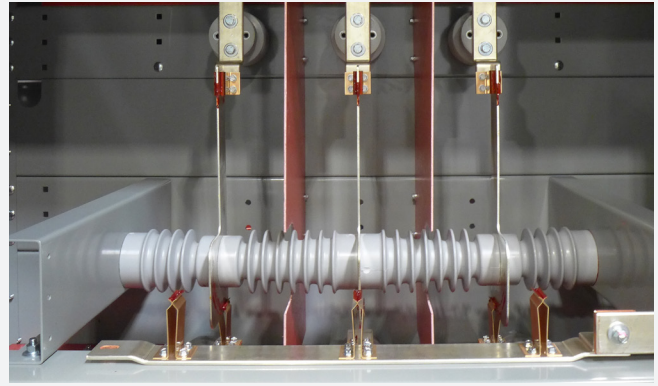
- 5kV: 48" W x 48"D x 90"H
- 15kV: 60" W x 48"D x 90"H

Meter Socket Base

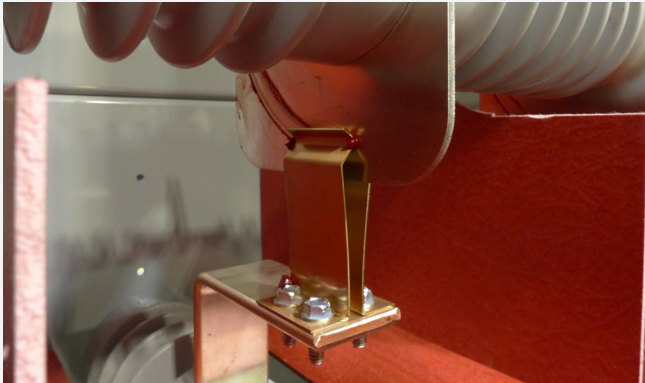
- Various UL Recognized Meter Sockets



IEM VT Switch Blade



IEM VT Disconnect Switch



IEM VT Copper Clips

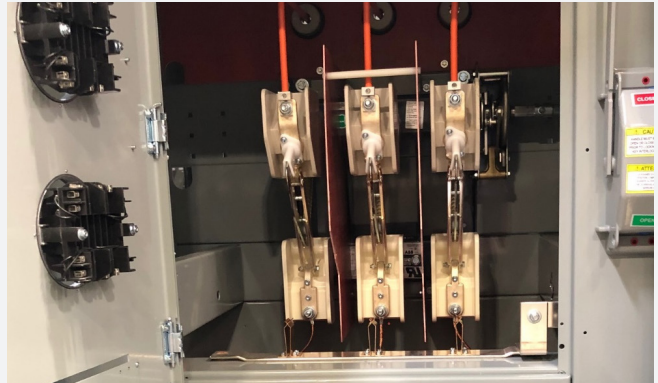


ABB VT Disconnect Switch

IEM VT Disconnect Switch - UL Certified

- Switch Blade - Aluminum
- Copper Clips
- Switch Insulators - HJ Intl. 6" and 8.75"
- Switch Handle - Powercon
- Switch Phase and Ground Bus - 2" x 1/4" Copper

ABB VT Disconnect Switch - UL Certified

- Part #: Type VK3B1524U0OCCR1000
- Switch Ground Bus: 2" x 1/4" Copper



Industrial Electric Mfg.

iemfg.com

